

# SAMPLE PRIMARY ELECTION BALLOT

## VOTE ONE SIDE ONLY

GEM COUNTY

STATE OF IDAHO

MAY 27, 2008

### INSTRUCTIONS TO VOTER

#### VOTE ONE SIDE ONLY

Idaho law permits you to vote for candidates from only **ONE** political party.

You may also vote the Nonpartisan Judicial Nominating Ballot.

To vote, fill in the oval (  ) next to the candidate of your choice. To vote a "Write-in", fill in the oval next to the blank write-in line **and** write the name of your choice on the blank write-in line.

If you make a mistake, request a new ballot from an election worker.



| DEMOCRATIC                                  | DEMOCRATIC                     |
|---|--------------------------------|
| CANDIDATES FOR LEGISLATIVE DISTRICT OFFICES | CANDIDATES FOR PRECINCT OFFICE |

**FOR LEGISLATIVE DISTRICT 11  
FOR STATE SENATOR**  
(Vote for One)

**FOR PRECINCT COMMITTEEMAN**  
(Vote for One)

\_\_\_\_\_  
(WRITE-IN)

\_\_\_\_\_  
(WRITE-IN)

**FOR LEGISLATIVE DISTRICT 11  
FOR STATE REPRESENTATIVE  
POSITION A**  
(Vote for One)

### NONPARTISAN BALLOT

**Official Judicial Nominating  
Election Ballot**

BOB SOLOMON

**JUSTICE OF THE  
SUPREME COURT**

\_\_\_\_\_  
(WRITE-IN)

**FOR LEGISLATIVE DISTRICT 11  
FOR STATE REPRESENTATIVE  
POSITION B**  
(Vote for One)

**TO SUCCEED JUSTICE  
JOEL D. HORTON**  
(Vote for One)

| DEMOCRATIC                           |
|--------------------------------------|
| CANDIDATES FOR UNITED STATES OFFICES |

**FOR PRESIDENT**  
(Vote for One)

- HILLARY CLINTON
- KEITH RUSSELL JUDD
- BARACK OBAMA
- None of the names shown (UNCOMMITTED)
- \_\_\_\_\_  
(WRITE-IN)

**CANDIDATES FOR COUNTY OFFICES**

**FOR COUNTY COMMISSIONER  
FIRST DISTRICT**  
(Vote for One)

\_\_\_\_\_  
(WRITE-IN)

**FOR COUNTY COMMISSIONER  
SECOND DISTRICT**  
(Vote for One)

**TO SUCCEED JUSTICE  
WARREN E. JONES**  
(Vote for One)

WARREN E. JONES

**JUDGE OF THE  
COURT OF APPEALS**

**TO SUCCEED JUDGE  
SERGIO A. GUTIERREZ**  
(Vote for One)

**FOR UNITED STATES SENATOR**  
(Vote for One)

- DAVID J. ARCHULETA
- LARRY LAROCCO
- \_\_\_\_\_  
(WRITE-IN)

\_\_\_\_\_  
(WRITE-IN)

**FOR COUNTY SHERIFF**  
(Vote for One)

\_\_\_\_\_  
(WRITE-IN)

**FOR PROSECUTING ATTORNEY**  
(Vote for One)

\_\_\_\_\_  
(WRITE-IN)

SERGIO A. GUTIERREZ

**FOR REPRESENTATIVE IN CONGRESS  
FIRST DISTRICT**  
(Vote for One)

- LARRY GRANT
- WALT MINNICK
- \_\_\_\_\_  
(WRITE-IN)

**VOTE ONE SIDE ONLY**

Typ:01 Seq:0006 Spl:01

OFFICIAL STAMP BOX

© Election Systems & Software, Inc. 1981, 2002

**NOTE: The order of the candidates on this sample ballot may not necessarily reflect the rotation in your precinct on election day.**

**OFFICIAL PRIMARY ELECTION BALLOT  
GEM COUNTY, IDAHO  
MAY 27, 2008  
Emerson 06**

No. 0006

# SAMPLE PRIMARY ELECTION BALLOT

## VOTE ONE SIDE ONLY

GEM COUNTY

STATE OF IDAHO

MAY 27, 2008

### INSTRUCTIONS TO VOTER

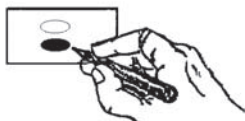
#### VOTE ONE SIDE ONLY

Idaho law permits you to vote for candidates from only **ONE** political party.

You may also vote the Nonpartisan Judicial Nominating Ballot.

To vote, fill in the oval (●) next to the candidate of your choice. To vote a "Write-in", fill in the oval next to the blank write-in line **and** write the name of your choice on the blank write-in line.

If you make a mistake, request a new ballot from an election worker.



| REPUBLICAN                                  | REPUBLICAN               |
|---|--------------------------|
| CANDIDATES FOR LEGISLATIVE DISTRICT OFFICES | COUNTY OFFICES CONTINUED |

**FOR LEGISLATIVE DISTRICT 11  
FOR STATE SENATOR**  
(Vote for One)

BRAD LITTLE

\_\_\_\_\_  
(WRITE-IN)

**FOR LEGISLATIVE DISTRICT 11  
FOR STATE REPRESENTATIVE  
POSITION A**  
(Vote for One)

GARY BAUER

MATT BEEBE

STEVEN THAYN

\_\_\_\_\_  
(WRITE-IN)

**FOR PROSECUTING ATTORNEY**  
(Vote for One)

\_\_\_\_\_  
(WRITE-IN)

| CANDIDATES FOR<br>PRECINCT OFFICE  |
|--|
| <b>FOR PRECINCT<br/>COMMITTEEMAN AND VOTER'S<br/>DELEGATE TO THE PARTY'S<br/>COUNTY AND DISTRICT CONVENTIONS</b><br><br>(Vote for One) |

\_\_\_\_\_

\_\_\_\_\_

\_\_\_\_\_  
(WRITE-IN)

| REPUBLICAN |
|------------|
|------------|

| CANDIDATES FOR UNITED STATES OFFICES |
|--------------------------------------|
|--------------------------------------|

**FOR PRESIDENT**  
(Vote for One)

JOHN MCCAIN

RON PAUL

None of the names shown (UNCOMMITTED)

\_\_\_\_\_  
(WRITE-IN)

**FOR UNITED STATES SENATOR**  
(Vote for One)

FRED M. ADAMS

BRIAN E. HEFNER

BILL HUNTER

RICHARD PHENNEGER

JIM RISCH

HAL JAMES STYLES JR.

SCOTT A. SYME

NEAL THOMPSON

\_\_\_\_\_  
(WRITE-IN)

**FOR REPRESENTATIVE IN CONGRESS  
FIRST DISTRICT**  
(Vote for One)

BILL SALI

MATTHEW SALISBURY

\_\_\_\_\_  
(WRITE-IN)

**FOR LEGISLATIVE DISTRICT 11  
FOR STATE REPRESENTATIVE  
POSITION B**  
(Vote for One)

WALT BAYES

CARLOS BILBAO

STEVE COYLE

JEFF JUSTUS

\_\_\_\_\_  
(WRITE-IN)

| CANDIDATES FOR COUNTY OFFICES |
|-------------------------------|
|-------------------------------|

**FOR COUNTY COMMISSIONER  
FIRST DISTRICT**  
(Vote for One)

SHARON CHURCH-PRATT

ROSE KEITH

\_\_\_\_\_  
(WRITE-IN)

**FOR COUNTY COMMISSIONER  
SECOND DISTRICT**  
(Vote for One)

LAN SMITH

\_\_\_\_\_  
(WRITE-IN)

**FOR COUNTY SHERIFF**  
(Vote for One)

JIM HECKATHORN

LEANNA MCKINNEY

TOM NETH

CHUCK ROLLAND

\_\_\_\_\_  
(WRITE-IN)

| NONPARTISAN BALLOT |
|--------------------|
|--------------------|

Official Judicial Nominating  
Election Ballot

| JUSTICE OF THE<br>SUPREME COURT |
|---------------------------------|
|---------------------------------|

**TO SUCCEED JUSTICE  
JOEL D. HORTON**  
(Vote for One)

JOHN BRADBURY

JOEL D. HORTON

**TO SUCCEED JUSTICE  
WARREN E. JONES**  
(Vote for One)

WARREN E. JONES

| JUDGE OF THE<br>COURT OF APPEALS |
|----------------------------------|
|----------------------------------|

**TO SUCCEED JUDGE  
SERGIO A. GUTIERREZ**  
(Vote for One)

SERGIO A. GUTIERREZ

|                           |
|---------------------------|
| <b>VOTE ONE SIDE ONLY</b> |
|---------------------------|

Typ:01 Seq:0006 Spl:01

**NOTE: The order of the candidates on this sample ballot may not necessarily reflect the rotation in your precinct on election day.**