

# DEWEY ROAD CORRIDOR STUDY

**PUBLIC OPEN HOUSE  
FEBRUARY 1, 2007**



# Purpose of Study

## *Purpose*

**To evaluate feasible alignment options for future preservation, evaluate environmental effects and identify design strategies.**

## *The Project includes:*

- Environmental review
- Development of a travel forecast model
- Traffic Study
- Roadway alignment options
- Roadway footprint options



*Derwey Road Corridor Study*

**Parametrix**



# Results of Stakeholder Outreach

Stakeholder Interviews were conducted in August and September 2006. A total of 14 interviews were conducted with 55 people. The following is a summary of their responses:

- **Thoughts about Connectivity**
  - ❑ Supports Economic Growth
  - ❑ More Direct Access
  - ❑ Better Access from Emmett to I-84
  - ❑ Relieves Pressure from SH 52 to Emmett
  - ❑ There is a Need, but not Dewey Road
- **Who Would Benefit?**
  - ❑ Commerce & Industry
  - ❑ Residents in the Area
  - ❑ Economic Development
- **When is the Road Needed?**
  - ❑ 5-10 Years
- **Aware of Dewey Road Extension?**
  - ❑ Yes
  - ❑ Property Owners at West end of Corridor were not Aware
- **Most Important Issues**
  - ❑ Lack of Funding; Cost
  - ❑ Environmental
  - ❑ Induced Growth
  - ❑ Timely Corridor Improvements
  - ❑ Preserve Agriculture
  - ❑ Crossing BLM Land
  - ❑ Adequate ROW for Future Needs
- **Desirable Study Outcome?**
  - ❑ Defined Alignment
  - ❑ Cost
  - ❑ Preserve Right-of-way

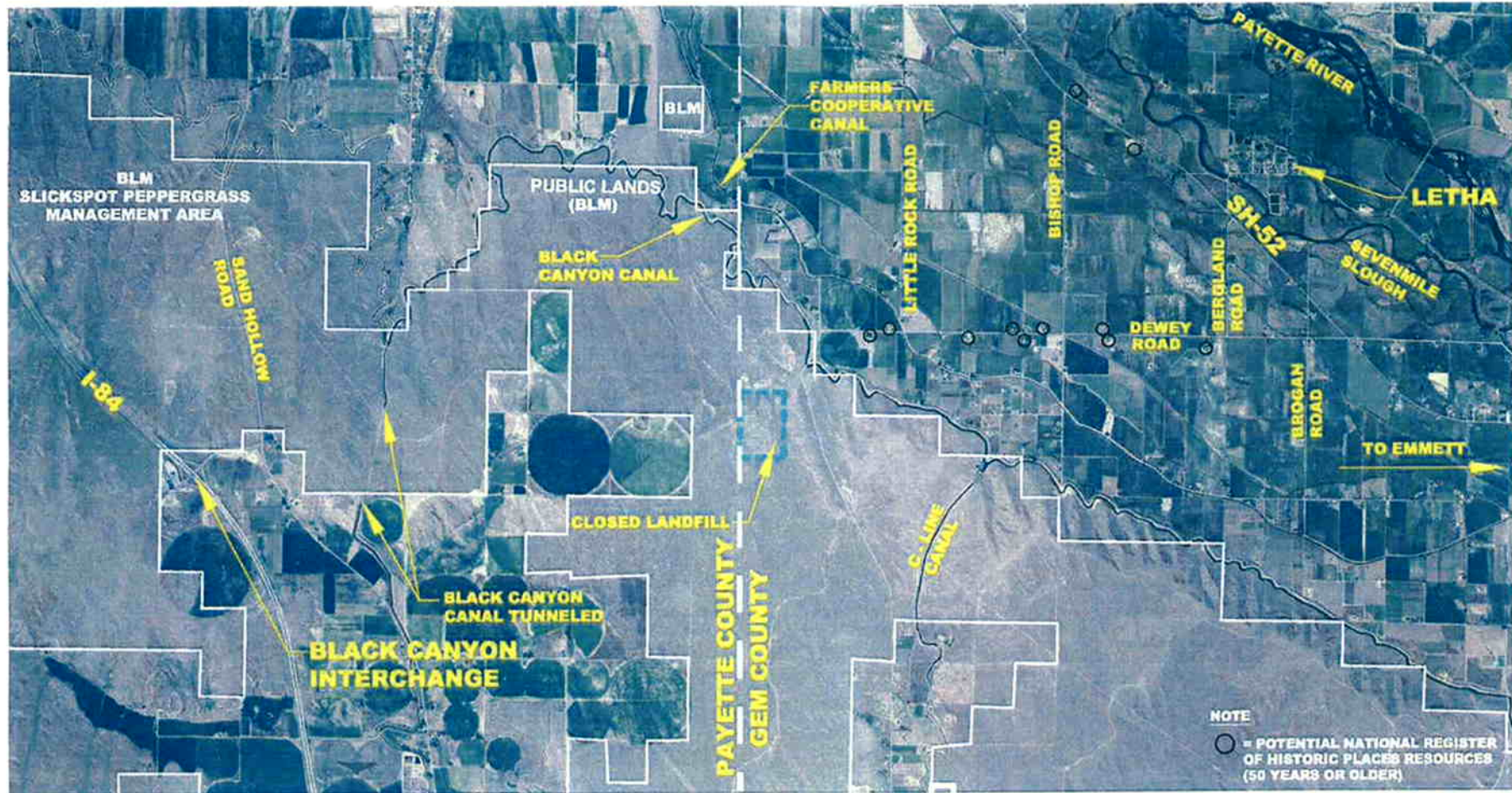


*Dewey Road Corridor Study*

**Parametrix**



# Environmental Features



*Dewey Road Corridor Study*

**Parametrix**



# Project Goals

- Maintain acceptable travel time
- Minimize impacts to existing structures
- Support economic development
- Minimize divisions of private agricultural land
- Minimize impacts to BLM land
- Provide transportation improvements at a reasonable cost
- Minimize environmental impacts



*Derwey Road Corridor Study*

**Parametrix**

